

new generation software



www.dart-sas.it

OT biolab

OT Bioelettronica

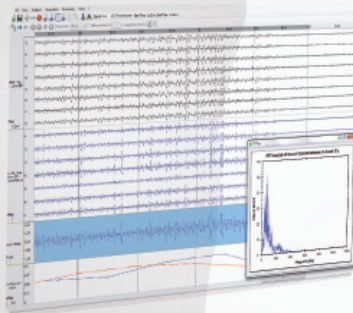
Administrative Office:

Via Lancia, 62 - Sc. A
10141 Torino (Italy)

Laboratory:

Corso Unione Sovietica, 312
10135 Torino (Italy)
mail@otbioelettronica.it

otbioelettronica.it



free download
at otbioelettronica.it

is a freeware software
designed to help your research



OT biolab is a freeware software designed to help your research



Also the acquisition settings, like gains and bandwidth, are detected from the instrument used for the acquisition and stored in the same data file. You can then add comments about each acquisition, sensor or subject and also store the settings of the biofeedback integrated in OT biolab if you use it during a protocol.

Process your data

Tens of processing plugins are already available in OT biolab and we add new plugin every month.

The plugins allows you to extract amplitude and frequency information from your signals, filter them, extract the envelope, estimate the conduction velocity from EMG signals and plot maps of RMS, row data and innervations zone estimated automatically.

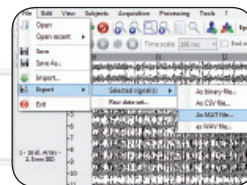
Contact us and suggest what you need, this should be the next plugin we will add to OT biolab.

But if you want to process your data with other software like Matlab, Lab View, Phyton, Excell or any other software, you can export any signal or the results generated from the OT biolab plugins, in many different format than can be opened from other software.

OT biolab is free and it will be forever. Thank you to all our collaborators and customers who help us to design and improve OT biolab.

OT biolab

OT biolab can be used to acquire, review and process your data. It allows to acquire and display signals online from every instrument designed from OT Bioelettronica and allows to review any signal acquired using any of our datalogger. A list of plugins is then available for the data processing. Moreover, thanks to OT Connector module integrated with OT biolab, you can share data detected from your instrument online with your application running on Matlab, LabView, Phyton, and through the Ethernet, you can also share data on different computers with different operative systems, tablets or smartphones with WiFi capability.



Acquire and keep trace of your setup

OT biolab helps you to remember anything about setup and setting of your protocols. For each sensor or electrode it is possible to associate the proper adapter and detection mode. OT biolab check the proper use of a sensor, adapter and detection mode and can provide a warning if something in the setup is wrong. Each acquired signals will be associated to the proper sensor and adapter.

